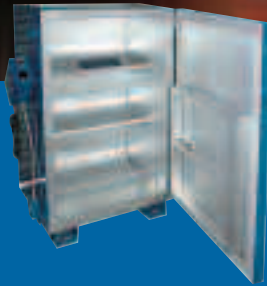




KEEN OVENS



PORTABLE ELECTRODE HOLDING OVENS

BENCH ELECTRODE HOLDING OVENS

FLOOR ELECTRODE HOLDING OVENS

FLUX HOLDING OVENS

ELECTRODE & FLUX REBAKE OVENS

MIG & TIG HOLDING OVENS

NITROGEN PURGE OVENS

CUSTOM PREHEAT OVENS



www.keenovens.com

1-888-512-2870

PORTABLE ELECTRODE HOLDING OVENS

PORTABLE

BENCH & FLOOR

FLUX & REBAKE

MIG & TIG

NITROGEN PURGE

CUSTOM



KT-20SS

The KT-20SS and KT-50SS are all stainless steel, including interior chamber, rivets and handles.

At Keen, we offer 5 lb., 15 lb. and 50 lb. capacity portable models. These rugged, lightweight ovens store welding electrodes at ideal temperatures to prevent moisture from being absorbed into the electrode coating.

Be aware that electrode coatings begin to absorb atmospheric moisture as soon as they are removed from factory packaging. If moisture is present in the coating during a weld, hydrogen is introduced which can cause porosity, cracking and worm holes. Take what you need from the shop holding oven, and load up a Keen portable before heading to the field.

All models feature a hard-wired connection point with power cord strain relief.



K-10

The K-10, KT-15 and KT-50 feature a square shape for vertical stability, and a tough powder coat finish in Keen blue.



KT-50SS

KT-15



KT-15R

The K-10, KT-15 and KT-50 feature a unique, dual-voltage wiring that can be used in either a 110/120V or 220/240V setting. The oven adjusts to the voltage automatically when plugged in. No switching or rewiring needed to use the dual-voltage feature.

The KT-15 and KT-50 portable models are standard equipped with an "on" indicating light.



KT-50

PORTABLE ELECTRODE HOLDING OVENS

(see back cover for voltage & part number)

Model	Capacity	Interior Dimensions	Temperature Range	Thermostat	"ON" Indicator Light
K-5	5 lbs. - 14" Rods	2" x 14.75"	275°F max.	NO	NO
	2.3 kg - 35.5 cm Rods	5.1 cm x 37.5 cm	135°C max.		
K-10	15 lbs. - 14" Rods	3" x 3" x 14.5"	275°F max.	NO	NO
	6.8 kg - 35.5 cm Rods	7.6 cm x 7.6 cm x 36.8 cm	135°C max.		
KT-15	15 lbs. 18" Rods	3.3" Dia. x 19"	275°F max.	NO	YES
	6.8 kg - 45.7 cm Rods	8.4 cm Dia. x 48.3 cm	135°C max.		
KT-15HT	15 lbs. 18" Rods	3" Dia. x 19"	150°F - 550°F	YES	YES
	6.8 kg - 45.7 cm Rods	7.6 cm Dia. x 48.3 cm	65°C - 288°C		
KT-15R	15 lbs. 18" Rods	3.3" Dia. x 19"	275°F max.	NO	YES
	6.8 kg - 45.7 cm Rods	8.4 cm Dia. x 48.3 cm	135°C max.		
KT-15W/T	15 lbs. 18" Rods	3.3" Dia. x 19"	100°F - 300°F	YES	YES
	6.8 kg - 45.7 cm Rods	8.4 cm Dia. x 48.3 cm	38°C - 149°C		
KT-50	50 lbs. - 18" Rods	6" x 6" x 19"	100°F - 300°F	YES	YES
	22.7 kg - 45.7 cm Rods	15.2 cm x 15.2 cm x 48.3 cm	38°C - 149°C		
KT-20SS	15 lbs. - 18" Rods	3" x 3" x 19"	100°F - 300°F	NO	NO
	6.8 kg - 45.7 cm Rods	7.6 cm x 7.6 cm x 48.3 cm	38°C - 149°C		
KT-50SS	50 lbs. - 18" Rods	6" x 6" x 19"	100°F - 300°F	YES	YES
	22.7 kg - 45.7 cm Rods	15.2 cm x 15.2 cm x 48.3 cm	38°C - 149°C		



K-5

The K-5 at 3 lbs. is the lightest portable oven on the market.

Products in catalogue may vary from actual product and may contain optional equipment available at additional cost.

View more photos of our products and download product information at www.keenovens.com



BENCH & FLOOR ELECTRODE HOLDING OVENS

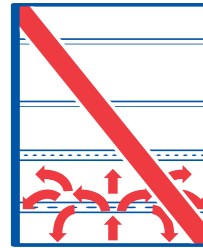


K-450
Stacked

THE KEEN OVEN ADVANTAGE



Competition - Uneven Heat Distribution



Competition - Electrode Blocked Circulation



Keen Ovens - Ideal, Even Heat Distribution

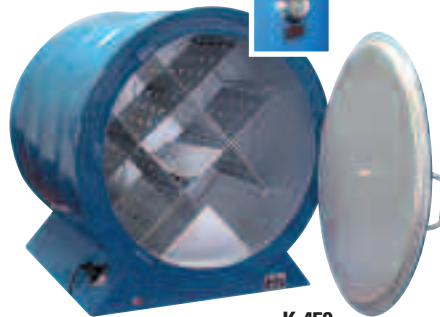
BENCH ELECTRODE HOLDING OVENS (see back cover for voltage & part number)

Model	Capacity	Interior Dimensions	Temperature Range
K-200	200 lbs. - 18" Rods	19"L x 13"W "L x 13"H	150°F - 300°F
	90.9 kg - 45.7 cm Rods	48.3 cm x 33.0 cm x 33.0 cm	65°C - 149°C
K-450	450 lbs. - 18" Rods	20"L x 19.5" Dia.	150°F - 550°F
	204.5 kg - 45.7 cm Rods	50.8 cm x 49.5 cm	65°C - 288°C



K-200

Optional Thermometer



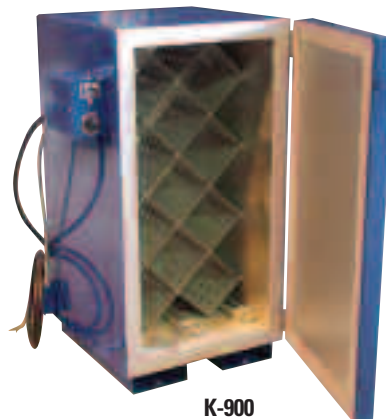
K-450

Our bench models are designed for the small to medium-sized shop. Too large to be considered portable, yet small and light enough when empty to be picked up by a single person, bench ovens are an economical choice when a large floor oven is not required. The K-200 is our smallest bench oven, capable of storing 200 lbs of welding electrodes at optimum temperature. The K-450 model stores up to 450 lbs, and features an external dial adjustable thermostat. Both models come standard with an "ON" indicating light.

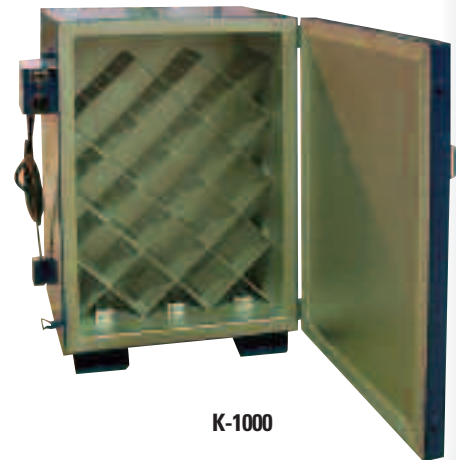
FLOOR ELECTRODE HOLDING OVENS (see back cover for voltage & part number)

Model	Capacity	Interior Dimensions	Temperature Range
K-900	1000 lbs. - 18" Rods	19"L x 18"W x 36"H	150°F - 550°F
	453.6 kg - 45.7 cm Rods	48.3 cm x 45.7 cm x 91.4 cm	65°C - 288°C
K-1000	1500 lbs. - 18" Rods	20.5"L x 27"W x 40"H	150°F - 550°F
	680.4 kg - 45.7 cm Rods	52.1 cm x 68.6 cm x 101.6 cm	65°C - 288°C

The K-900 and K-1000 floor models are cost-effective storage solutions for the large shop. The K-900 is a 1000 lb. capacity unit and our largest standard model, the K-1000, holds up to 1500 lbs. These ovens are designed to store large amounts of welding electrodes at ideal temperatures. All new models come equipped with a digital programmable controller (not shown) and are available in a variety of voltages and phases. Keen floor models are built with forklift slots for ease of handling around the shop.



K-900



K-1000

At Keen, customization is our specialty. If you would like us to modify our standard ovens to suit an application, just call us. We can build ovens to suit your needs.

Questions? Visit www.keenovens.com or contact us toll-free at **1.888.512.2870** and by e-mail sales@keenovens.com

PORTABLE

BENCH & FLOOR

FLUX & REBAKE

MIG & TIG

NITROGEN PURGE

CUSTOM

FLUX HOLDING OVENS & REBAKE OVENS

PORTABLE

BENCH & FLOOR

FLUX & REBAKE

MIG & TIG

NITROGEN PURGE

CUSTOM



KF-100A

Our flux holding ovens are designed to store welding flux at ideal temperatures to maintain dryness. Just as welding electrodes and wire need to be protected, the same logic applies to welding flux which also readily absorbs atmospheric moisture. The only way to be truly sure your flux is weld ready is to have it stored at the proper temperatures. Available in hopper-style design with bottom unloading and also stationary floor design, these units are highly insulated and energy efficient.

FLUX HOLDING OVENS

(see back cover for voltage & part number)

Model	Capacity	Interior Dimensions	Temperature Range
KF-100A	125 lbs. - Flux	16" x 12" x 22"	150°F - 300°F
	56.7 kg - Flux	40.6 cm x 30.5 cm x 55.8 cm	65°C - 149°C
KF-300	300 lbs. - Flux	20" x 20" x 24"	150°F - 550°F
	136.4 kg - Flux	50.8 cm x 50.8 cm x 61.0 cm	66°C - 288°C
KF-600	600 lbs. - Flux	20" x 20" x 40" Sloped Bottom	150°F - 550°F
	272.8 kg - Flux	50.8 cm x 50.8 cm x 101.6 cm	66°C - 288°C



KF-300



KF-600

ELECTRODE & FLUX REBAKE OVENS

(see back cover for voltage & part number)

Model	Capacity	Interior Dimensions	Temperature Range
KHT-500	475 lbs. - 18" Rods	18" x 19" x 18"	0°F - 999°F
	215.5 kg - 45.7 cm Rods	45.7 cm x 48.3 cm x 45.7 cm	-18°C - 537°C
KHT-900	1000 lbs. - 18" Rods	21" x 18" x 36"	0°F - 999°F
	453.6 kg - 45.7cm Rods	53.3cm x 45.7 cm x 91.4 cm	-18°C - 537°C
KHTF-600	600 lbs. - Flux	20" x 20" x 40" Sloped Bottom	0°F - 999°F
	272.1 kg - Flux	50.8 cm x 50.8 cm x 101.6 cm	-18°C - 537°C



KHT-500

Our high-temperature rebake ovens are designed to recondition and rebake welding consumables that have been damaged by harmful moisture exposure. Coatings on welding electrodes rapidly absorb atmospheric moisture once they are removed from factory tins. When moisture-contaminated flux or electrodes are used in the welding process, hydrogen is released into the metal when heat is applied. When the weld cools it can become brittle, crack and/or develop pinholes.

Our rebake ovens are the perfect solution to restore factory-fresh dryness to your consumables in order to improve performance on the job.



KHTF-600



KHT-900

Keen flux ovens are hopper-style with bottom-unloading design. Flux is top-loaded and discharged through a slide valve located on the bottom of the unit. Temperature is controlled and displayed by a programmable digital controller (not shown). All flux oven models come standard with an "ON" indicating light. The KF-100A and KF-300 flux ovens are mounted on a movable platform with casters for easy handling.

Products in catalogue may vary from actual product and may contain optional equipment available at additional cost.

View more photos of our products and download product information at www.keenovens.com



MIG & TIG HOLDING OVENS

We offer the broadest range of MIG & TIG storage ovens in the welding industry. For small shops we have compact bench-top models like the K-4RS which holds 4 / 33# wire spools, and the K-4RSM which holds up to 4 / 60# wire spools. For the large shop we offer a broad range of options for Mig, Tig and mixed storage ovens such as the industry first K-MPO and the KT-99, originally designed for Boeing. With Keen, your expensive MIG and TIG consumables will always be protected.



K-360-36



K-4RS



K-4RSM



K-MPO

MIG & TIG HOLDING OVENS

(see back cover for voltage & part number)

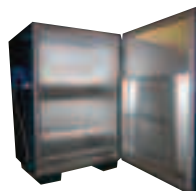
Model	Capacity	Interior Dimensions	Temperature Range
K-4RS	4 - 12" Coils 4 - 30.5 cm Coils	18" x 18" x 18" 45.7 cm x 45.7 cm x 45.7 cm	50°F - 250°F 10°C - 121°C
K-4RSM	4 - 16" (60 lb.) Coils 4 - 40.6 cm (27.2 kg) Coils	24" x 18" x 24" 60.96 cm x 45.7 cm x 60.96 cm	50°F - 250°F 10°C - 121°C
K-MPO	600 lbs. - 18" Rods, up to 6 - 12" Coils, 8 Tubes - 36" Filler Rods in Door Rack, Flat Shelf 272.7 kg - 45.7 cm Rods, up to 6 - 30.5 cm Coils, 8 Tubes - 91.4 cm Filler Rods in Door Rack, Flat Shelf	27.5" x 19.5" x 40" 69.96 cm x 49.53 cm x 101.6 cm	150°F - 550°F 65.5°C - 288°C
K-360-36	260 lbs. - 36" Filler Material 118.2 kg - 91.4 cm Filler Material	38" x 16" x 24" 96.52cm x 45.72 cm x 60.96 cm	50°F - 250°F 10°C - 121°C
KT-99	36" Filler Material on Sliding Shelves, 12 - 12" Coils and/or Powders on Sliding Drawer 91.4 cm Filler Material on Sliding Shelves, 12 - 30.5 cm Coils and/or Powders on Sliding Drawer	37" x 18.25" x 47" 93.98 cm x 46.35 cm x 119.38 cm	50°F - 250°F 10°C - 121°C
K-1000M&T	8 - 10 lb. Tubes 36" Filler Material, 8 - 12" Coils 8 - 4.5 kg Tubes 91.4 cm Filler Material, 8 - 30.5 cm Coils	20.5" x 27" x 40" 52.1 cm x 68.6 cm x 101.6 cm	50°F - 250°F 10°C - 121°C
K-1000CS	12 - 60 lb. (16" Dia.) Mig Wire Coils (6 per shelf), 8 - 10 lb. Tubes 36" Tig Filler Rod in Door Rack 12 - 27.3 kg (40.6 cm Dia.) Mig Wire Coils, 8 - 4.5 kg Tubes (91.4 cm) Tig Filler Rod in Door Rack	19.5" x 27.5" x 40" 52.1 cm x 69.8 cm x 101.6 cm	50°F - 250°F 10°C - 121°C



KT-99



K-1000M&T



K-1000CS



KEEN OVENS

At Keen, customization is our specialty. If you would like us to modify our standard ovens to suit an application, just call us. We can build ovens to suit your needs.

Questions? Visit www.keenovens.com or contact us toll-free at **1.888.512.2870** and by e-mail sales@keenovens.com

PORTABLE

BENCH & FLOOR

FLUX & REBAKE

MIG & TIG

NITROGEN PURGE

CUSTOM

NITROGEN PURGE OVENS

PORTABLE

BENCH & FLOOR

FLUX & REBAKE

MIG & TIG

NITROGEN PURGE

CUSTOM



Inlet Valve

K-360-36-NP

Nitrogen is the standard medium for contamination-free storage because it is inert - it neither reacts with stored materials nor carries moisture - and because it can be isolated and purified economically. Because nitrogen has a lower specific gravity than air, when introduced into the oven it immediately purges air that may contain contaminants or moisture. Keen nitrogen purge welding ovens are often used for highly sensitive applications in the nuclear, marine and aerospace industries.

Keen offers an array of oven models equipped with a gas inlet valve to enable the flow of nitrogen gas into the cabinet. Some of the models are standard welding ovens we offer and others are completely custom. If none of the ovens below suit your needs, we can design one that does.



KT-99-NP



K-NP



K-1000M&T-NP



K-4RS-NP

NITROGEN PURGE OVENS

(see back cover for voltage & part number)

Model	Capacity	Interior Dimensions	Temperature Range
K-4RS-NP	4 - 12" Coils <i>4 - 30.5 cm Coils</i>	18" x 18" x 18" <i>45.7 cm x 45.7 cm x 45.7 cm</i>	50°F - 250°F <i>10°C - 121°C</i>
K-NP	180 lbs. Filler Material - 1 Cradle holds 8 - 12" Wide Coils <i>81.8 kg Filler Material - 1 Cradle holds 8 - 30.5cm Wide Coils</i>	20" x 40" x 20" <i>50.8 cm x 101.6 cm x 50.8 cm</i>	50°F - 250°F <i>10°C - 121°C</i>
K-360-36-NP	260 lbs. - 36" Filler Material <i>118.2 kg - 91.4 cm Filler Material</i>	38" x 16" x 24" <i>96.52 cm x 45.72 cm x 60.96 cm</i>	50°F - 250°F <i>10°C - 121°C</i>
KT-99-NP	36" Filler Material on Sliding Shelves, 12 - 12" Coils and/or Powders on Sliding Drawer <i>91.4 cm Filler Material on Sliding Shelves, 12 - 30.5 cm Coils and/or Powders on Sliding Drawer</i>	37" x 18.25" x 47" <i>93.98 cm x 46.35 cm x 119.38 cm</i>	50°F - 250°F <i>10°C - 121°C</i>
K-1000M&T-NP	8 - 10 lb. Tubes 36" Filler Material, 8 - 12" Coils <i>8 - 4.5 kg Tubes 91.4 cm Filler Material, 8 - 30.5 cm Coils</i>	20.5" x 27" x 40" <i>52.1 cm x 68.6 cm x 101.6 cm</i>	50°F - 250°F <i>10°C - 121°C</i>



KEEN OVENS



Products in catalogue may vary from actual product and may contain optional equipment available at additional cost.

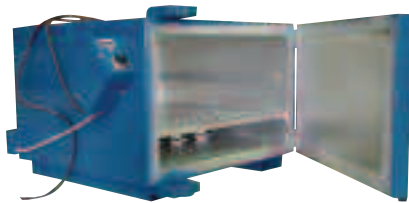
View more photos of our products and download product information at www.keenovens.com

CUSTOM PREHEAT OVENS

Keen preheat and postheat ovens are used by many welders and fabricators to heat-treat weldments or metallic parts before welding or installation. Many of the preheat ovens we offer are standard Keen models with slight modifications to the shelving system, insulation, temperature range or size. Following are some common items that customers have preheated in our ovens:

ship bearings • cylinder heads • castings • welded joints • plates • aluminum • carbon steel joints • pumps

Each oven below was custom-manufactured to client specifications.



K-HT9



KPH-324



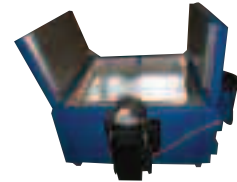
KTL-16FC



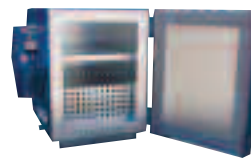
K-1000SB



K-TL-30



K-TL-FC6



K-PHB



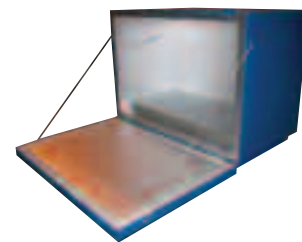
K-TR

CUSTOM PREHEAT OVENS

Model	Oven Type	Interior Dimensions (in.)	Interior Dimensions (cm)
K-HT9	Front-Loading	30" x 30" x 18"	76.20cm x 76.20cm x 45.72cm
K-RA	Front-Loading	24" x 42" x 24"	60.96cm x 106.68cm x 60.96cm
KHF-8	Front-Loading	24" x 24" x 24"	60.96cm x 60.96cm x 60.96cm
K-PH15	Front-Loading	36" x 24" x 26"	91.44cm x 60.96cm x 66.04cm
KPH-324	Front-Loading	24" x 24" x 30"	60.96cm x 60.96cm x 76.20cm
KTL-24	Top-Loading	24" x 24" x 12"	60.96cm x 60.96cm x 30.48cm
KTL-16FC	Top-Loading	16.5" x 17" x 20"	41.91cm x 43.18cm x 50.8cm
K-TR	Front-Loading	36" x 40" x 44"	91.44cm x 101.60cm x 111.76cm
K-PHB	Front-Loading	18" x 12" x 10"	45.72cm x 30.48cm x 25.4cm
K-1000SB	Front-Loading	25" x 26" x 57.5"	63.5cm x 66.04cm x 146.05cm
K-TL-FC6	Top-Loading	30" x 30" x 12"	76.2 cm x 76.2 cm x 30.48 cm
K-FSU	Front-Loading	20.5" x 21.5" x 40"	52.1 cm x 55.88 cm x 101.6 cm
K-TL-30	Top-Loading	30" x 30" x 30"	76.2 cm x 76.2 cm x 76.2 cm



KHF-8



K-RA

PORTABLE

BENCH & FLOOR

FLUX & REBAKE

MIG & TIG

NITROGEN PURGE

CUSTOM

At Keen, customization is our specialty. If you would like us to modify our standard ovens to suit an application, just call us. We can build ovens to suit your needs.

Questions? Visit www.keenovens.com or contact us toll-free at **1.888.512.2870** and by e-mail sales@keenovens.com



QUOTE REQUEST FORM

1. Scan or copy this page.
2. Mark the items for which you need pricing.
3. Visit our local distributor directory at www.keenovens.com to find a distributor.
4. Fill out your contact information at the bottom and fax or e-mail to your preferred distributor.
5. Established or inquiring dealers may also use this form to fax Keen toll-free at 888-512-2867.



KEEN OVENS

PLEASE QUOTE THE FOLLOWING MARKED ITEMS (☑):

©2008, Henkel, Inc. Hammond, LA 70401.
All Rights Reserved. Revision 081108.

Please Quote:	Model	Voltage	Part Number	Page #
<input type="checkbox"/>	K-5	120V Only	#010114	2
<input type="checkbox"/>	K-10	Dual Voltage 120V/240V	#010112	2
<input type="checkbox"/>	KT-15	Dual Voltage 120V/240V	#010101	2
<input type="checkbox"/>	KT-15HT	Single Voltage Only – 120V or 240V	Call Keen	2
<input type="checkbox"/>	KT-15W/T	Dual Voltage 120V/240V	#010102	2
<input type="checkbox"/>	K-15R	120V Only	#010104	2
<input type="checkbox"/>	KT-50	Dual Voltage 120V/240V	#010201	2
<input type="checkbox"/>	KT-20SS	Dual Voltage 120V/240V	#010117	2
<input type="checkbox"/>	KT-50SS	Dual Voltage 120V/240V	#010205	2
<input type="checkbox"/>	K-200	120V	#010301	3
<input type="checkbox"/>		240V	#010303	3
<input type="checkbox"/>	K-450	120V	#010402	3
<input type="checkbox"/>		240V	#010401	3
<input type="checkbox"/>	K-900	480V	#010405	3
<input type="checkbox"/>		240V 3-Phase	#010407	3
<input type="checkbox"/>		480V 3-Phase	#010404	3
<input type="checkbox"/>		120V	#010601	3
<input type="checkbox"/>	K-1000	240V	#010602	3
<input type="checkbox"/>		480V	#010603	3
<input type="checkbox"/>	K-1000	240V 3-Phase	#010607	3
<input type="checkbox"/>		480V 3-Phase	#010604	3
<input type="checkbox"/>		120V	#010701	3
<input type="checkbox"/>		240V	#010702	3
<input type="checkbox"/>	KF-100A	480V	#010705	3
<input type="checkbox"/>		240V 3-Phase	#010726	3
<input type="checkbox"/>		480V 3-Phase	#010703	3
<input type="checkbox"/>	KF-300	120V	#011305	4
<input type="checkbox"/>		240V	#011306	4
<input type="checkbox"/>		480V	#011307	4
<input type="checkbox"/>	KF-600	120V	#011401	4
<input type="checkbox"/>		240V	#011402	4
<input type="checkbox"/>		480V	#011403	4
<input type="checkbox"/>		240V 3-Phase	#011406	4
<input type="checkbox"/>	KF-600	480V 3-Phase	#011404	4
<input type="checkbox"/>		240V	#011503	4
<input type="checkbox"/>		480V	#011508	4
<input type="checkbox"/>		240V 3-Phase	#011510	4
<input type="checkbox"/>		480V 3-Phase	#011505	4

Please Quote:	Model	Voltage	Part Number	Page #
<input type="checkbox"/>	KHT-500	240V	#011603	4
<input type="checkbox"/>		480V	#011604	4
<input type="checkbox"/>		240V 3-Ph	#011606	4
<input type="checkbox"/>	KHT-900	480V 3-Ph	#011605	4
<input type="checkbox"/>		240V	#011101	4
<input type="checkbox"/>		480V	#011102	4
<input type="checkbox"/>	KHTF-600	240V 3-Ph	#011107	4
<input type="checkbox"/>		480V 3-Ph	#011103	4
<input type="checkbox"/>		240V	#011501	4
<input type="checkbox"/>	K-4RS	480V	#011502	4
<input type="checkbox"/>		240V 3-Ph	#011513	4
<input type="checkbox"/>		480V 3-Ph	#011505	4
<input type="checkbox"/>		120V	#010503	5
<input type="checkbox"/>	K-4RSM	240V	#010504	5
<input type="checkbox"/>		480V	#010505	5
<input type="checkbox"/>		120V	#010506	5
<input type="checkbox"/>	K-MPO	240V	#010502	5
<input type="checkbox"/>		480V	Call Keen	5
<input type="checkbox"/>		120V	#010706	5
<input type="checkbox"/>	K-360-36	240V	#010707	5
<input type="checkbox"/>		480V	#010708	5
<input type="checkbox"/>		240V 3-Ph	#010709	5
<input type="checkbox"/>	KT-99	480V 3-Ph	#010710	5
<input type="checkbox"/>		Dual Voltage 120V/240V	#010803	5
<input type="checkbox"/>	K-1000M&T	120V	#010802	5
<input type="checkbox"/>		Dual Voltage 120V/240V	#010801	5
<input type="checkbox"/>	K-1000CS	120V	#010901	5
<input type="checkbox"/>		240V	Call Keen	5
<input type="checkbox"/>	K-NP	480V	Call Keen	5
<input type="checkbox"/>		240V 3-Ph	#010902	5
<input type="checkbox"/>	K-360-36-NP	480V 3-Ph	Call Keen	5
<input type="checkbox"/>		Dual Voltage 120V/240V	#010903	5
<input type="checkbox"/>	KT-99-NP	Dual Voltage 120V/240V	#010714	5
<input type="checkbox"/>		120V	#010507	6
<input type="checkbox"/>	K-1000M&T-NP	120V	#011602	6
<input type="checkbox"/>		Dual Voltage 120V/240V	#010805	6
<input type="checkbox"/>	K-1000M&T-NP	Dual Voltage 120V/240V	#010806	6
<input type="checkbox"/>		Dual Voltage 120V/240V	#010904	6

TO: Company: _____ Contact Person: _____
 Address: _____ State: _____ Zip Code: _____
 Telephone: _____ Fax: _____ E-Mail: _____

FROM: Company: _____ Contact Person: _____
 Address: _____ State: _____ Zip Code: _____
 Telephone: _____ Fax: _____ E-Mail: _____

KEEN OVENS

P.O. Box 1322
 Hammond, LA 70404
 Toll-Free: 1.888.512.2870
 Local: 985.345.2171
 Toll-Free Fax: 1.888.512-2867
 Local Fax: 985.345.5653